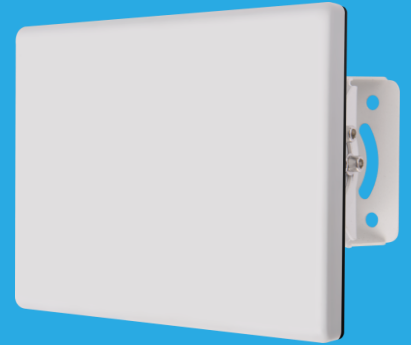
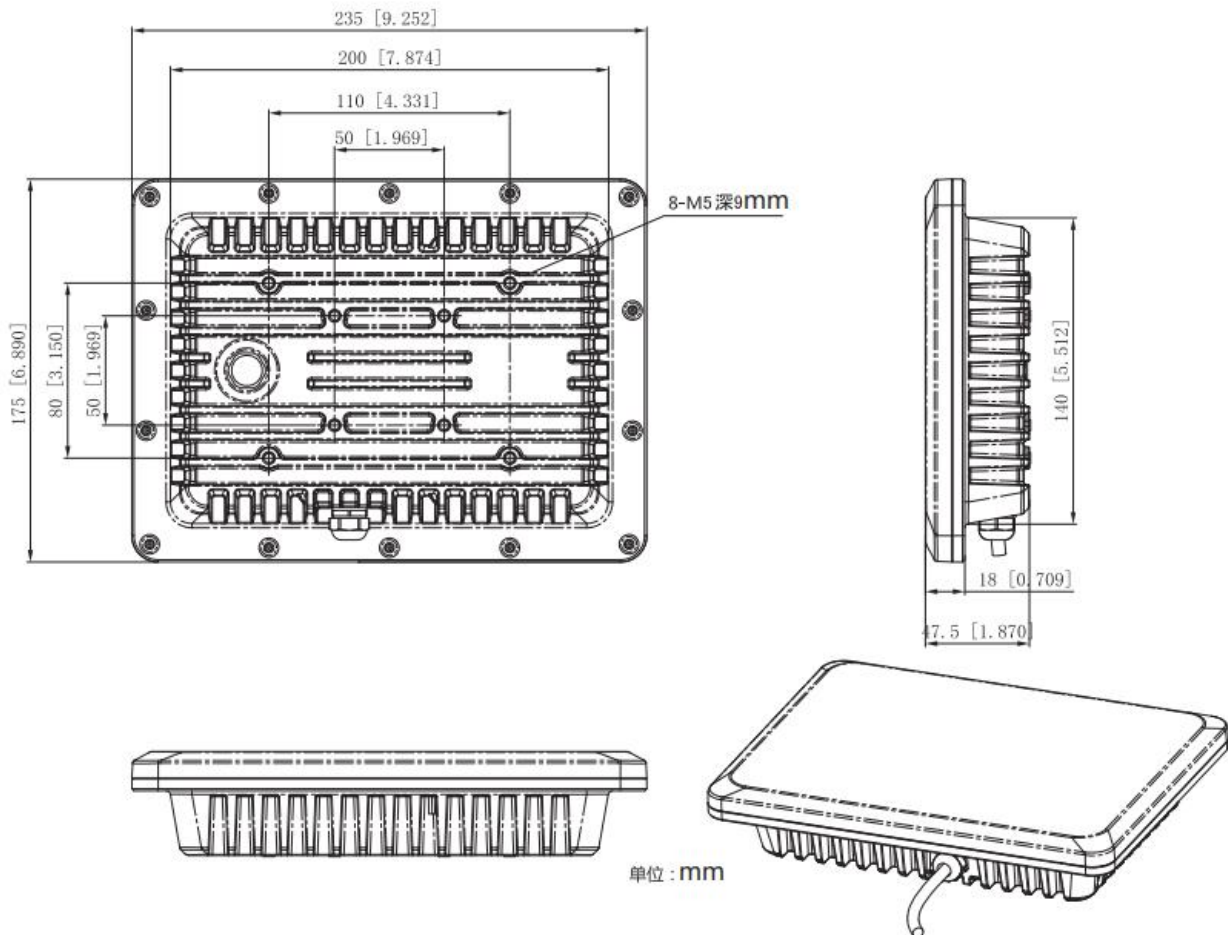


SN-SMWR21A-P

Perimeter Security Radar



Dimensions (mm)



Specification

Radar Characteristics	
Radar Sensor	FMCW Radar
Radar Output Data	Distance, direction, angle
Transmit Frequency	24.05~24.15GHz
Refresh Rate	8Hz
EIRP	29dBm
Power Consumption	8W
Detection Performance	
Target Identification	People, Vehicles
Recognition Pattern	Radar triggers an alarm, linkage video review
Detection Range (Pedestrian)	1~300m, 1~200m (walking/running across), 1~150m (climbing/squatting across)
Detection Range (vehicle)	1~300m
Detection Accuracy	±0.75m
Detection Resolution	1.5m
Speed Range	0.03m/s~30m/s
Speed Accuracy	0.03m/s
Speed Resolution	0.06m/s
Angle Accuracy	±1°
FOV	Azimuth:20°; Elevation:13°
Hardware Characteristics	
Communication Protocol	UDP, TCP
Network Interface	1 RJ45 10M/100M (PoE)
Alarm Interface	2ch output, 1ch input
RS485	Support
Relay	2ch output
Physical Characteristics	
Power Supply	12VDC/PoE (IEEE802.3af)
Working Temperature	-40~75°C
Storage Temperature	-40~85°C
Weight	1.0kg
Dimension	235×175×53.7mm
Protection Class	IP66