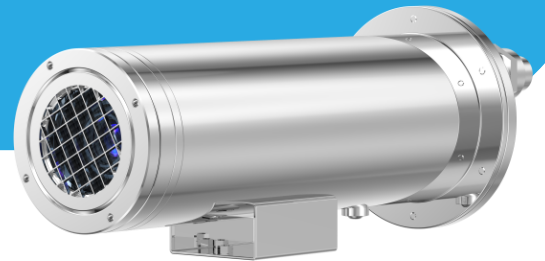




# SN-TPH4203DA-F

Explosion-proof Bullet Thermal Camera



## Key Features

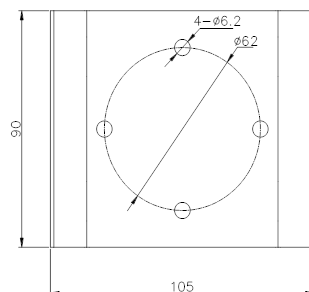
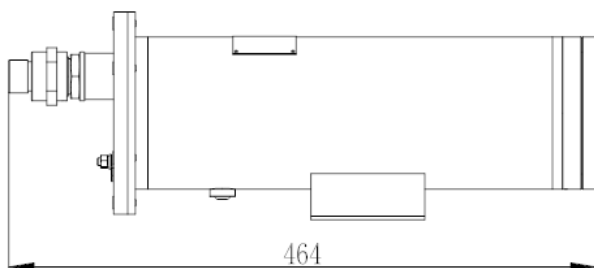
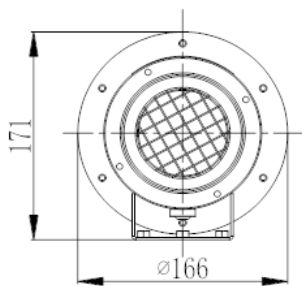
- Uncooled VOx Micro bolometer with 400×300 resolution
- 8/15/25/35/50 mm fixed lens optional
- NETD ≤ 40mK
- Support temperature monitoring exception alarm
- Support 3 temperature measurement rule types (spot, line, area)
- Support human/vehicle detection
- Intelligent analysis: intrusion, single line crossing, double line crossing, loitering, wrong-way, people counting, enter area, leave area
- Material: 316L Stainless steel
- IP68

## Specification

Thermal Camera					
Detector Type	Uncooled VOx Micro bolometer 400×300				
Resolution	Sensor is 400×300. Image can be scaled up to 704×576				
Pixel size	17μm				
Spectral Range	8 to 14μm				
Thermal Sensitivity (NETD)	≤ 40mK				
Lens Type	Fixed focal length				
Focus Control	Manual focus				
Focal Length	8mm	15mm	25mm	35mm	50mm
F No.	F1.0	F1.0	F1.0	F1.0	F1.0
Angle of View	H: 46°, V: 35.3°	H: 25.5°, V: 19.2°	H: 15.4°, V: 11.6°	H: 11°, V: 9°	H: 7.7°, V: 5.8°
Detection Distance (Fire: 1m×1m)	235m (771ft)	441m (1,446.9ft)	735m (2,411.4ft)	1,029m (3,376ft)	1,417m (4,649ft)
Detection Distance (Humans: 1.8×0.5m)	235m (771ft)	441m (1,446.9ft)	735m (2,411.4ft)	1,029m (3,376ft)	1,417m (4,649ft)
Detection Distance (Vehicles: 4×1.5m)	722m (2,368.8ft)	1,353m (4,439ft)	2,255m (7,398.3ft)	3,137m (10,292ft)	4,510m (14,796.6ft)
Recognition Distance (Humans: 1.8×0.5m)	59m (193.6ft)	110m (360.9ft)	184m (603.7ft)	257m (843.2ft)	368m (1,207.3ft)
Recognition Distance (Vehicles: 4×1.5m)	180m (590.6ft)	338m (1,109ft)	564m (1,850.4ft)	789m (2,588.6ft)	1,127m (3,697.5ft)
Note: The detection ranges are calculated with Johnson's criteria and vary in different weather conditions.					
*Product performance is based on testing in a controlled environment. Your results may vary due to several external and environmental factors.					
Video and Audio					
Main Stream	704×576 @25/30fps				
Sub Stream	CIF @25/30fps				
Bit Rate Control	CBR/VBR				
Bit Rate	Main stream:100Kbps to 6Mbps, Sub stream: 10Kbps to 1.5Mbps				
Region of Interest	Off / On (8 Zone, Rectangle)				
Smart Encode	Support				
Image					
Image Setting	Brightness, Sharpness, Contrast				
Mirror	Support				
Pseudo-color Setting	White-hot/Black-hot/Rainbow/Ironbow etc. up to 17 modes				
Privacy Masking	Off / On (5 Area, Rectangle)				
Flat-Field Calibration	Support				
Noise Reduction	2D/3D DNR				
Privacy Masking	Support				
Smart Function					
Smart Alarm	Motion detection, I/O alarm, Disk alarm, IVS alarm, Temperature detection & alarm				

Intelligent Functions	Human detection, Vehicle detection
Intelligent Analysis	Intrusion, Single line crossing, Double line crossing, Loitering, Wrong-way, Enter area, Leave area Support alarm triggering by specified target types (human and vehicle), People counting
<b>Temperature Detection</b>	
Temperature Detection	3 temperature measurement rule types, 20 rules in total, 1 full screen, 19 others (spot, areas, line).
Temperature Alarm	Temperature difference alarm, Threshold alarm, Temperature rise alarm
Accuracy	±2°C (35.6°F) / ±2%
Response Time	≤ 30ms
Temperature Range	-20°C to 150°C (-4°F to 302°F)
<b>Network</b>	
Protocols	IPv4/IPv6, HTTP, RTSP/RTP/RTCP, TCP/UDP, DHCP, DNS, PPPOE, SMTP, 802.1x
Interoperability	ONVIF, CGI, SDK
Web Viewer	<IE11, Chrome, Firefox, Microsoft Edge
Web Language	English, Chinese, Polish, Italian, Portuguese, Spanish, Russian, French, Czech, Hungarian
<b>Interface</b>	
Network Interface	1 Ethernet (10/100 Base-T) RJ-45 Connector
Audio Interface	1ch input, 1ch output
Alarm Interface	2ch input, 1ch output
RS485	Support
Reset Button	Built-in
SD Card Slot	Built-in Micro SD card slot, up to 256GB
<b>Electrical</b>	
Power Supply	100 to 240 VAC
Power Consumption	Max 25 W
Working Temperature	-40°C to 60°C (-40°F to 140°F)
Storage Conditions	0 to 90% RH
Certifications	CE/FCC
Ingress Protection	IP68
Casing	SUS316L
Dimensions	464 × 166 × 171mm (18.27 × 6.54 × 6.73 inch)
Net Weight	10 kg
<b>Ordering Information</b>	
<b>Model</b>	<b>Description</b>
SN-TPH4203DA-F08	Focal Length: 8mm
SN-TPH4203DA-F15	Focal Length: 15mm
SN-TPH4203DA-F25	Focal Length: 25mm
SN-TPH4203DA-F35	Focal Length: 35mm
SN-TPH4203DA-F50	Focal Length: 50mm

## Dimensions (mm)



## Accessories

### Optional:



SN-BK401A-SS  
Wall Mount



SN-BK400-SS(P/F/D)  
Junction Box



SN-CPL10A-SS  
Washing Tank



Flexible Tube